



SAM4S Receipt Printer

CUPS Driver

Mac OS X Installation Manual

Contents

Table of Contents

Table of Contents.....	2
1. Introduction	3
2. Overview	3
3. Prerequisite.....	3
4. Extracting files using GUI	5
5. Installation Wizard	5
6. Adding USB Printer	8
7. Adding Ethernet Printer	10
8. Printer Options	12
8.1 Default printer options.....	12
8.2 Custom printer options	14
9. Uninstalling Printer	16

1. Introduction

The purpose of this document is to describe how to install a SAM4S Receipt printer driver for Mac OS X(10.8.x), in detail. The document provides information on installation of SAM4S Receipt Printer driver on Mac OS X (10.8.x) (64 bit) operating system.

2. Overview

SAM4S Receipt printer driver for Mac OS X (10.8.x) can support thermal receipt printing with various paper sizes and logo printing along with cash drawer functionality.

3. Prerequisite

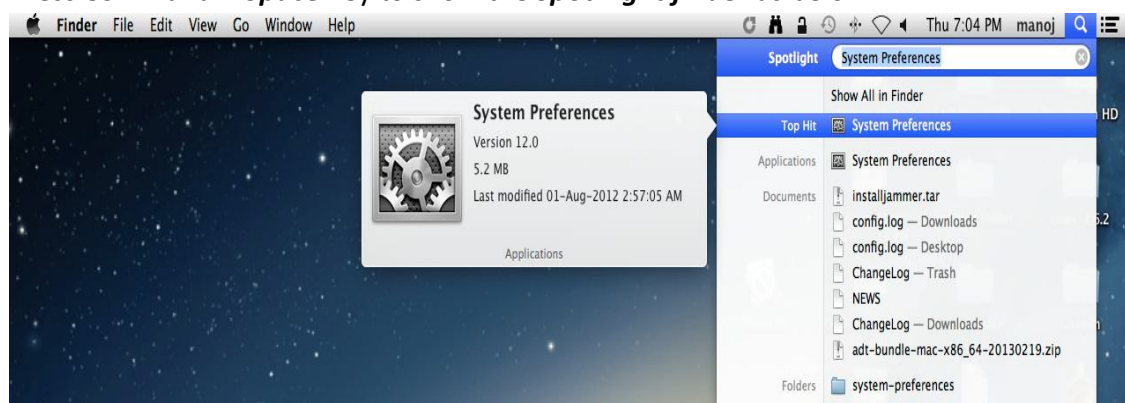
SAM4S Receipt printer driver has been tested on the following operating system:

⇒ Mac OS X(10.8.x) (OS X Mountain Lion) 64 Bit OS

Security & Privacy Settings:

⇒ By default Mac applications can be downloaded only from Mac app store. Since SAM4S Receipt printer driver is not a Mac store app, the security option **Anywhere** should be selected to install SAM4S receipt printer driver in Mac OS X. Please follow the below steps to select this option

⇒ Press **Command + Space** key to show the **Spot Light finder** as below



⇒ Type **System Preferences** in Spot Light finder and select the same to bring the System Preferences window as shown below

Installation Manual for SAM4S Receipt Printer CUPS Driver



⇒ Select the **Security & Privacy** option from the System Preferences to bring Security & Privacy window as shown in the below screen.



⇒ Select **General** tab, and select **Allow application download from:** option to **Anywhere** as marked in the above screen in **Red**

4. Extracting files using GUI

To install this SAM4S Receipt Printer Driver version 0.1.0.xx for Mac OS X by means of GUI, the user needs to be a root user.

- ⇒ Click on the ***SAM4S_Receipt_Printer_Driver_MACOSX-0.1.0.x_X86_64.zip*** archive file to unzip driver installer to a desired directory location.
- ⇒ Switch to the directory location where the setup has been un-zipped and double click on the binary to install the driver.

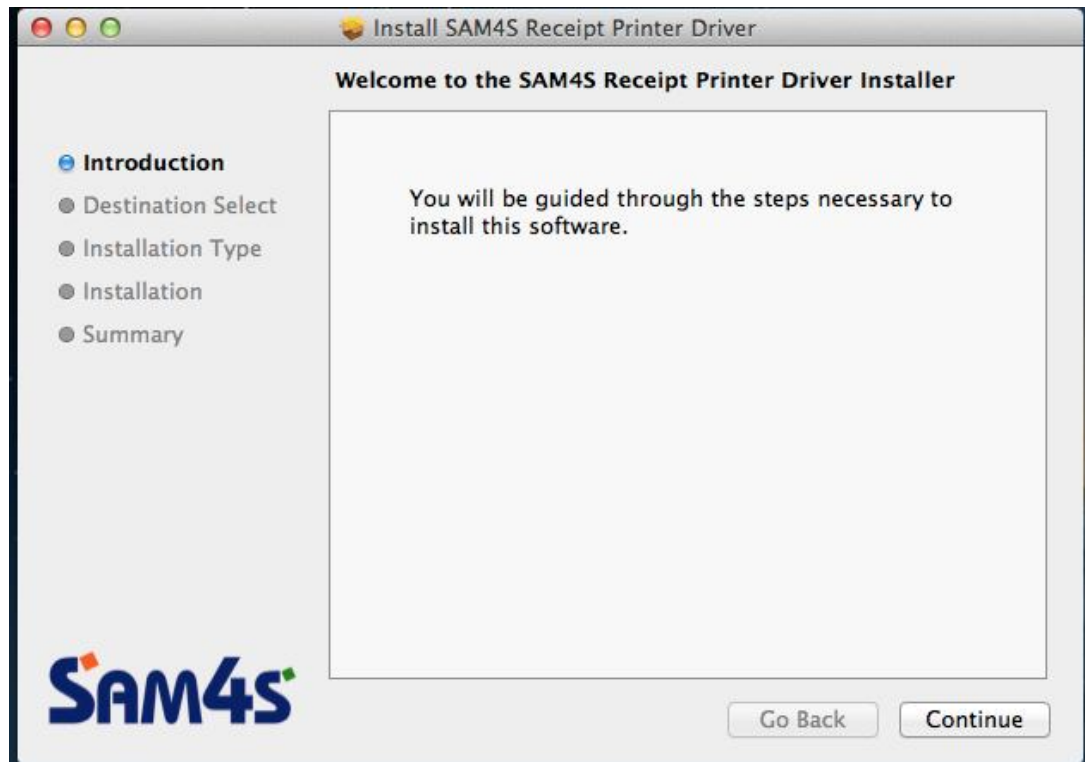
5. Installation Wizard

Prerequisite:

The installation can be performed only in ***Administrator*** mode. Type the Administrator password when prompted.

- ⇒ Double click on the un-zipped binary to initiate the installation of the driver
- ⇒ The following Welcome screen will appear

Installation Manual for SAM4S Receipt Printer CUPS Driver



⇒ To install the driver, click **Continue** in the welcome screen to bring **SAM4S Receipt Printer Driver Setup** wizard's **Destination Select** screen.



⇒ From the above screen, select any of the option for “**How do you want to install this**

Installation Manual for SAM4S Receipt Printer CUPS Driver

software?” and click the **Continue** button. The installation summary will appear as follows



⇒ Then click the **Install** button, it will prompt the administrator password to install the SAM4S Receipt printer driver in Mac OS X. Enter the password then click **the Install Software** button as shown in the following screen.



⇒ Now all files will be copied in to the directory

- /usr/libexec/cups/filter/RasterToSAM4S
- /usr/local/SAM4S
- /usr/share/cups/model

⇒ After copying is complete, the following screen will appear on successful installation.



⇒ Click on **Close** button in the setup wizard's Summary page to complete and exit the Installer.

6. Adding USB Printer

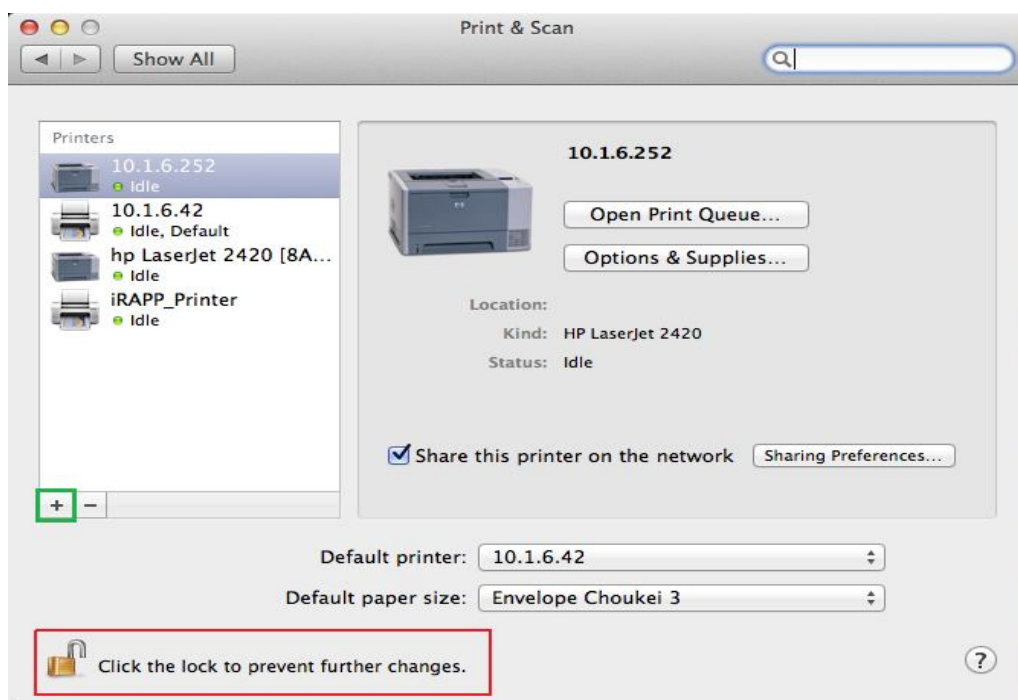
Following are the steps to add the USB Printer.

⇒ Install the printer driver first by following the steps under section(6) and continue to below step

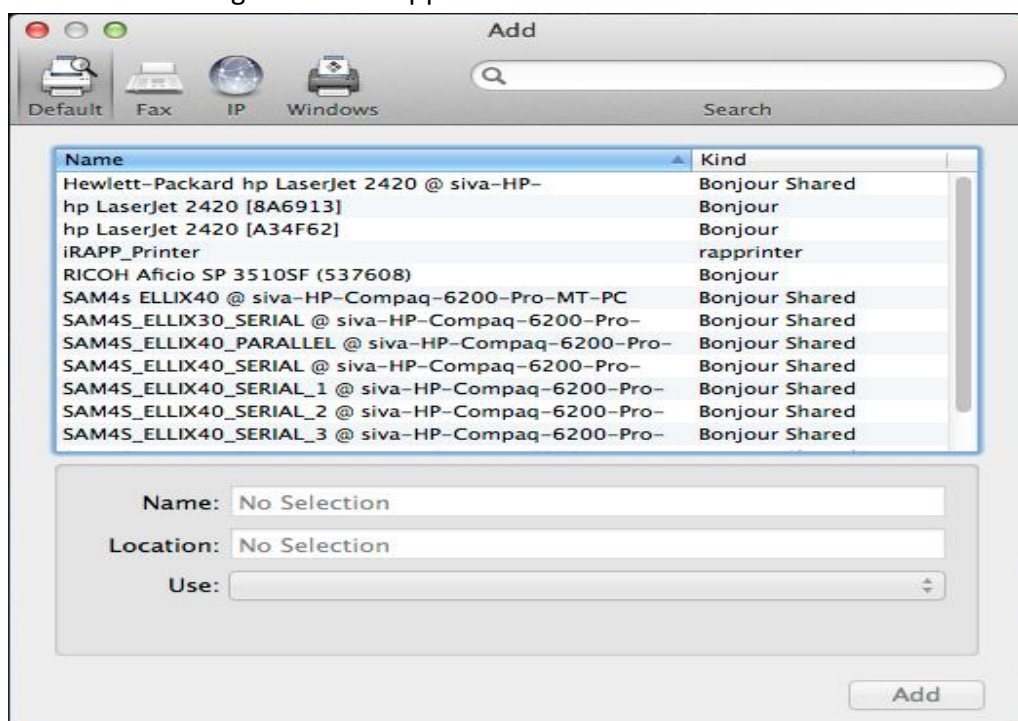
⇒ Press **Command + Space** key to show the **Spot Light finder**

⇒ Type **Print & Scan** in Spot Light Finder and select the same. The following screen will appear.

Installation Manual for SAM4S Receipt Printer CUPS Driver



⇒ In **Print & Scan** window click the “+” button marked in Green in the above screen. Then the following screen will appear.

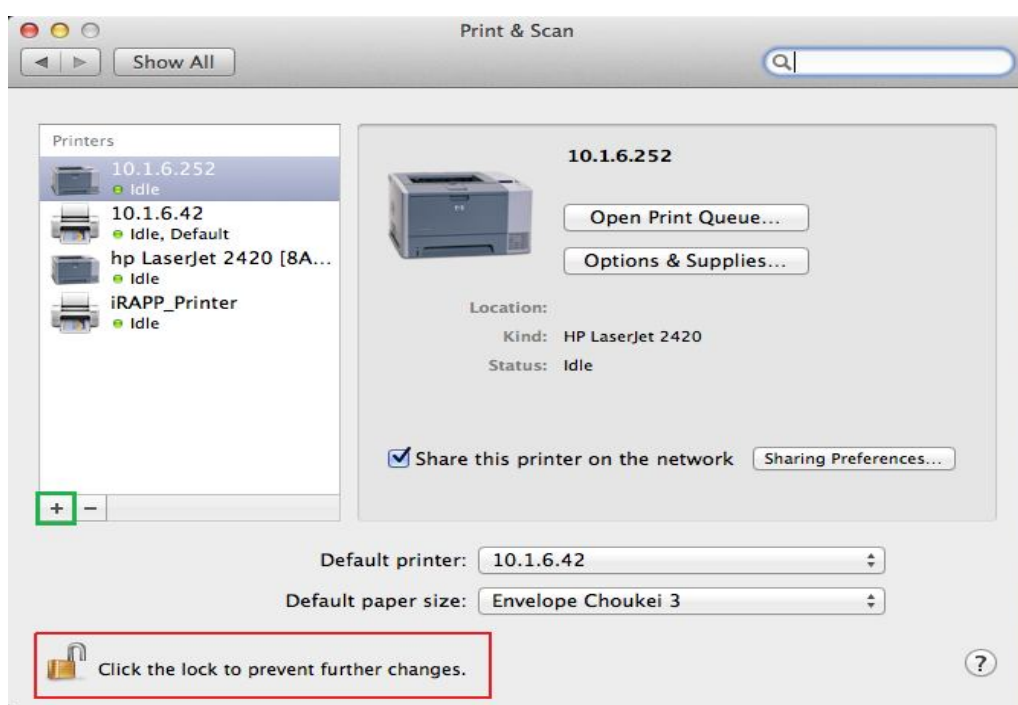


From the **Add** printer window as shown above, select the **SAM4s Ellix printer** and click **Add** button.

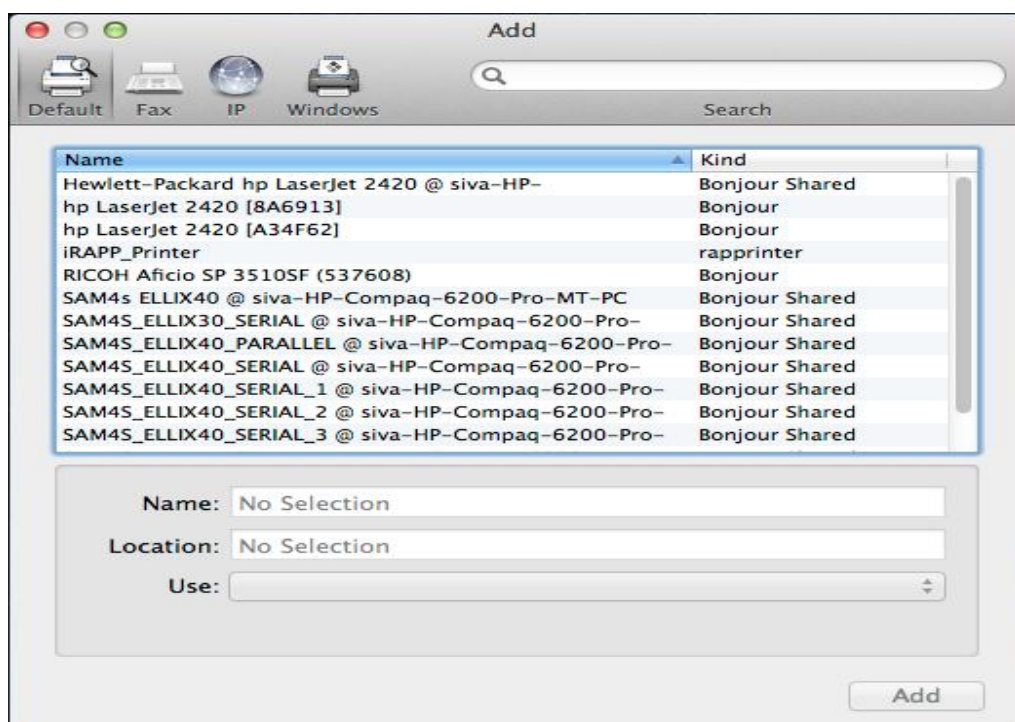
7. Adding Ethernet Printer

Following are the steps to add the Ethernet Printer.

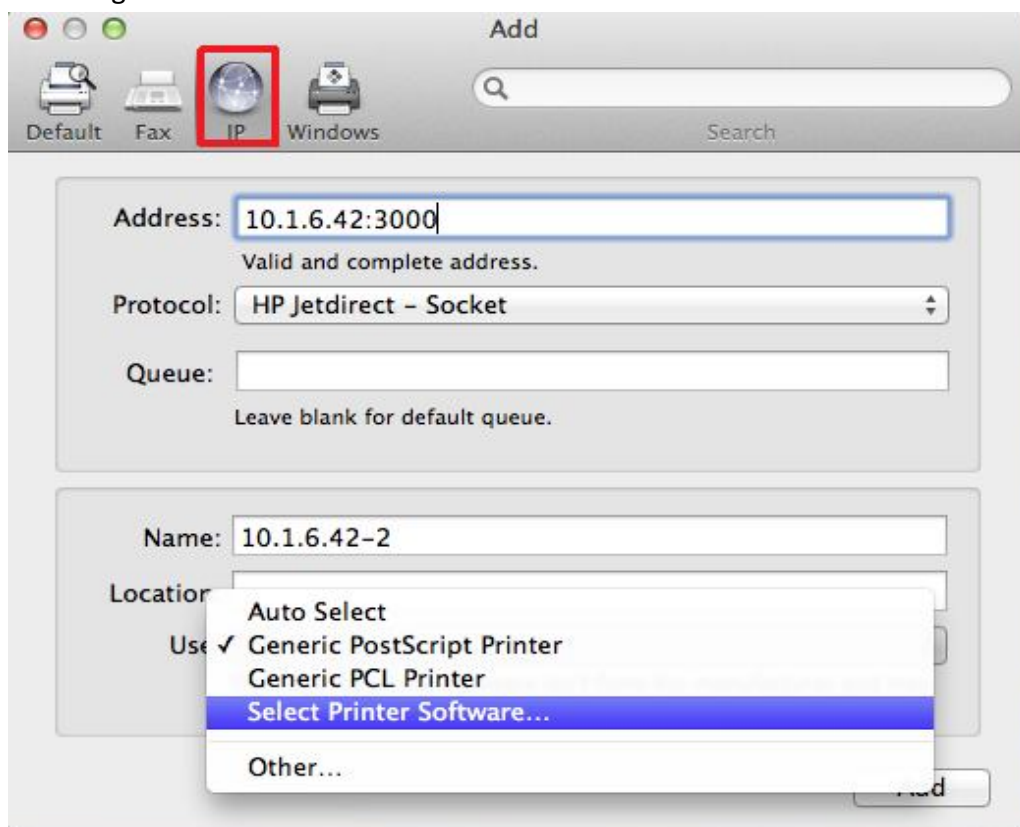
- ⇒ Install the printer driver first by following the steps under section(6) and continue to below step
- ⇒ Press **Command + Space** key to show the **Spot Light finder**
- ⇒ Type **Print & Scan** in Spot Light Finder and select the same. The following screen will appear.



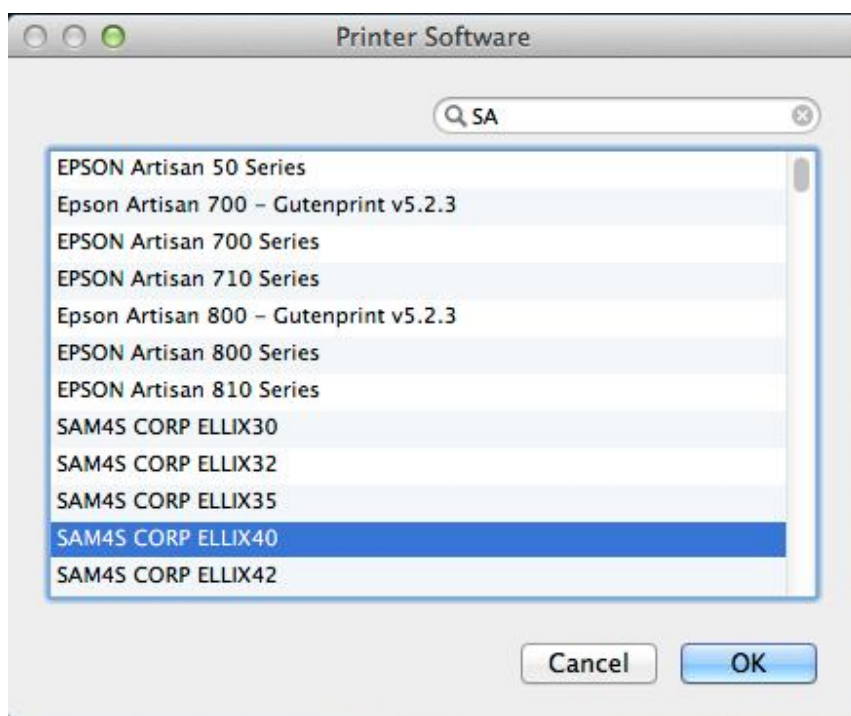
- ⇒ In **Print & Scan** window click the **“+”** button marked in Green in the above screen. Then the following screen will appear.



⇒ From the **Add** printer window as shown above, select the **IP** tab marked as **Red** in following screen.



- ⇒ In the **Address:** text box, enter the valid printer **IP address and port number** as shown in the above screen (example: 192.168.100.10:3000), Then select **HP Jetdirect – Socket** protocol.
- ⇒ Under the **Use** drop-down menu, click on **Select Printer Software...**, the following **Printer Software** screen will appear.



- ⇒ Select the desired printer model from that **Printer Software** list and click **OK** button to add the Ethernet printer. Printing will work only if the correct printer model is selected.

8. Printer Options

All printer options can be changed only from the cups web admin page (<http://localhost:631>) and not from Printer property page.

Following are the various printer options

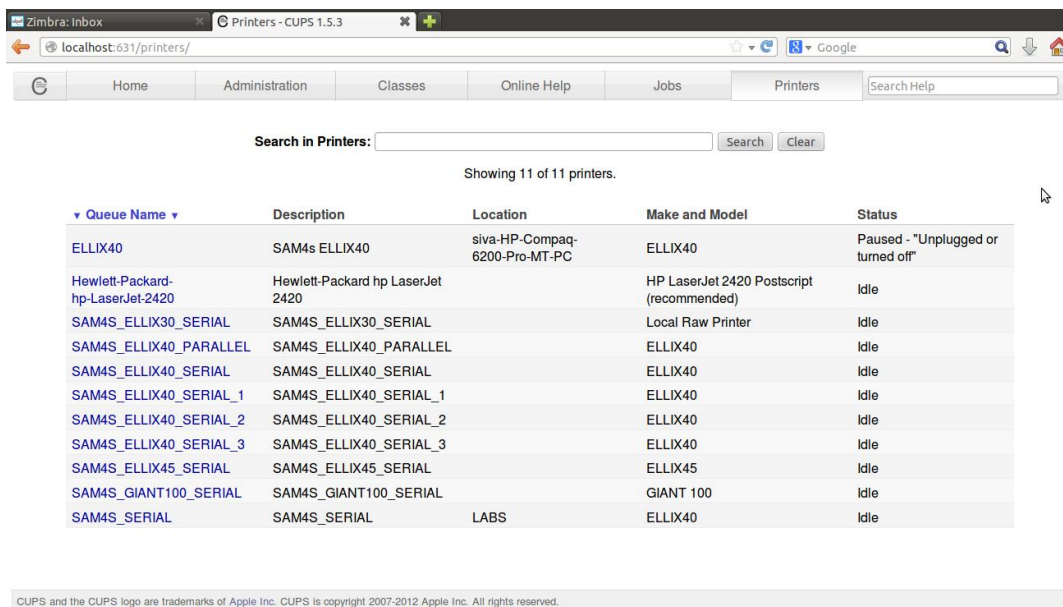
8.1 Default printer options

Following are the steps to change the default printer options

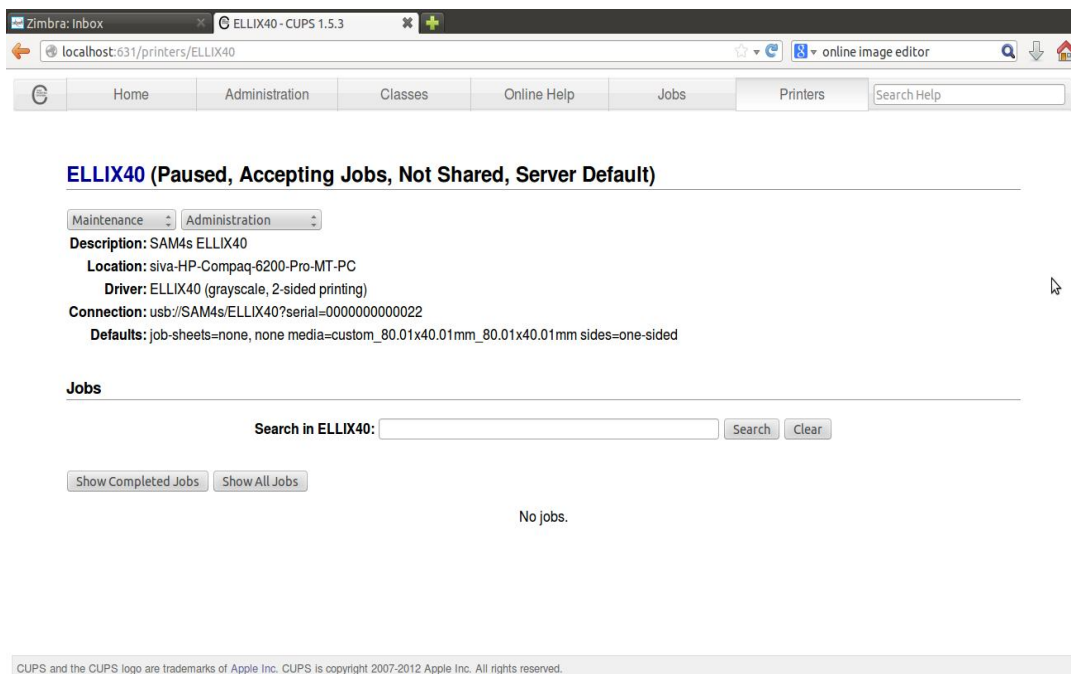
- ⇒ Open any web browser and go to CUPS web admin page (<http://localhost:631>)

Installation Manual for SAM4S Receipt Printer CUPS Driver

⇒ Click the **Printers** tab. This will list all the installed printers as shown in the following screen

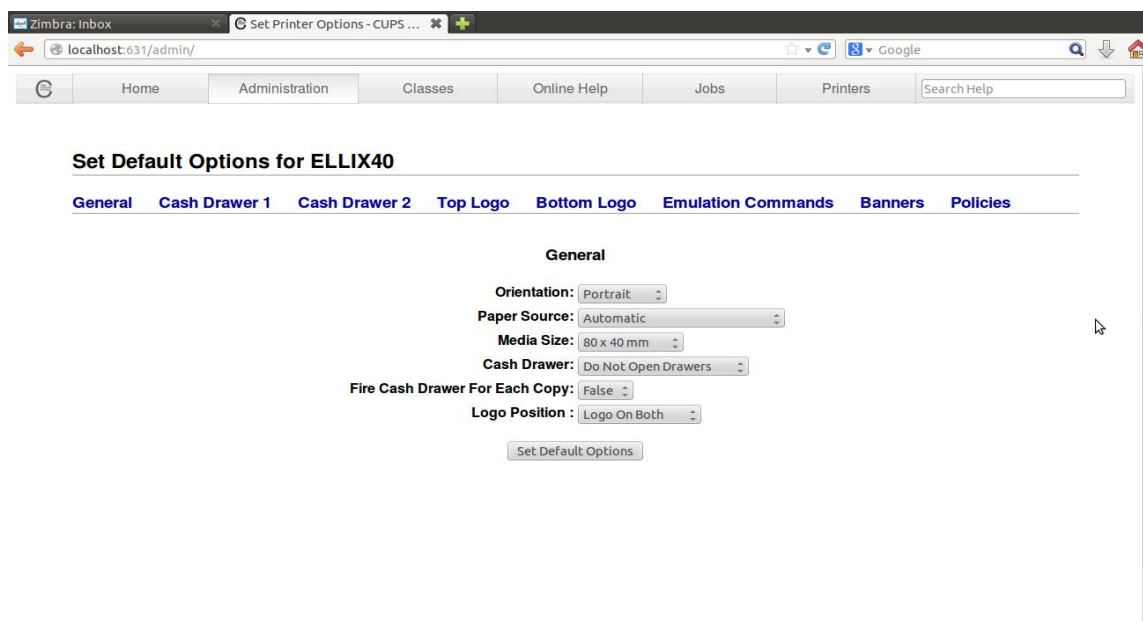


⇒ Select the desired SAM4S Printer from the list, the following screen will appear



⇒ Select the **Set Default Options** from the **Administration** drop box, the following screen will appear

Installation Manual for SAM4S Receipt Printer CUPS Driver



⇒ The various printer options such as **General**, **Cash Drawer 1**, **Cash Drawer 2**, **Top Logo**, **Bottom Logo** are tabbed, Select any of the desired tabs and change the necessary options and click the **Set Default Options** button to save the values

8.2 Custom printer options

Following are the steps to change the custom printer options

Follow the steps under section (9.1) to go to the CUPS admin printer options page, then follow the below steps to change the desired custom printer options

- **Custom Page Settings**

⇒ In the **General** tab, select **Custom** from the **Media Size** options. The Width, Height and Units options will appear as shown in the following screen

Installation Manual for SAM4S Receipt Printer CUPS Driver

The screenshot shows a web browser window with the address bar displaying 'localhost:631/admin/#General'. The page title is 'Set Default Options for ELLIX40'. Below the title is a navigation bar with tabs: 'General', 'Cash Drawer 1', 'Cash Drawer 2', 'Top Logo', 'Bottom Logo', 'Emulation Commands', 'Banners', and 'Policies'. The 'General' tab is selected. The main content area is titled 'General' and contains the following settings:

- Orientation: Portrait
- Paper Source: Automatic
- Media Size: Custom
- Width: 0
- Height: 0
- Units: Points
- Cash Drawer: Do Not Open Drawers
- Fire Cash Drawer For Each Copy: False
- Logo Position: Logo On Both

At the bottom of the settings area is a button labeled 'Set Default Options'. Below the settings area is a footer with the text: 'CUPS and the CUPS logo are trademarks of Apple Inc. CUPS is copyright 2007-2012 Apple Inc. All rights reserved.'

⇒ Enter the valid page **Width** and **Height** corresponding to the **Units** selected and then press the **Set Default Options** button to save the changes.

- **Custom Emulation Commands**

⇒ Select the **Emulation Commands** tab. The Start Doc Emulation and End Doc Emulation options will appear as shown in the following screen

The screenshot shows the same web browser window, but the 'Emulation Commands' tab is selected. The main content area is titled 'Emulation Commands' and contains the following settings:

- Start Doc Emulation: Custom
- Command: \x1B\x70\x1\x46\x46
- End Doc Emulation: Custom
- Command: \x1B\x70\x0\x46\x46

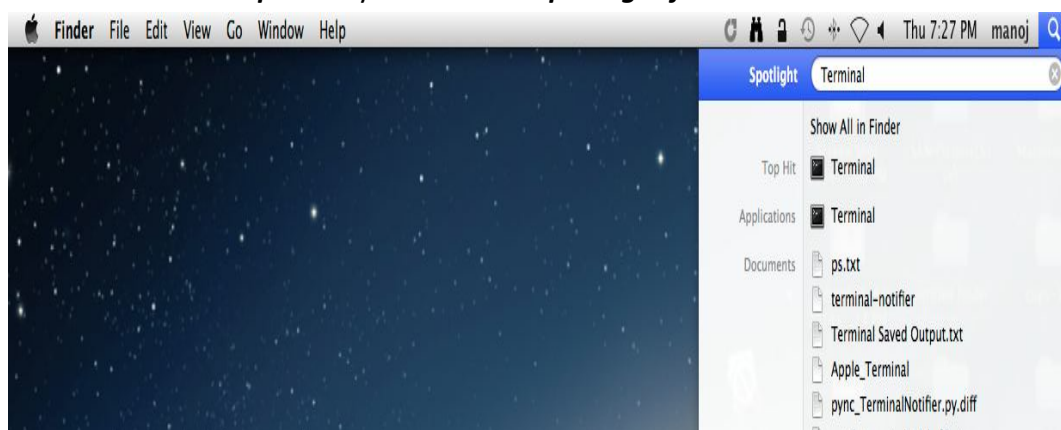
At the bottom of the settings area is a button labeled 'Set Default Options'.

- ⇒ Select **Custom** from the drop down options, the **Command** text box will appear as shown in the above screen and enter the valid Ellix printer commands in the command text box and then press the **Set Default Options** button to save the changes.

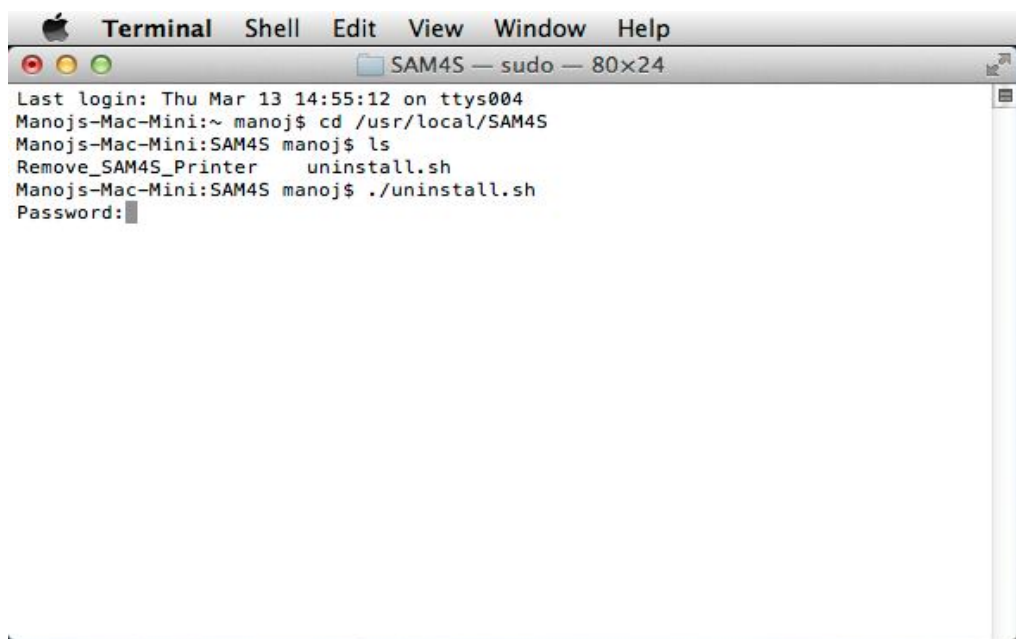
9. Uninstalling Printer

Following are the steps to uninstall **SAM4S Receipt printer driver** from the **Mac OS X**.

- ⇒ Press **Command + Space** key to show the **Spot Light finder** as below



- ⇒ Click on the **Spot Light Finder** [Marked in blue in the image above] and type in **Terminal** and click Terminal Link from the Spot Light Finder, the following screen will appear.



Installation Manual for SAM4S Receipt Printer CUPS Driver

- ⇒ In the **Terminal** window enter the following command to go to installation directory and press return key
 - `cd /usr/local/SAM4S`
 - `sudo ./uninstall.sh`
- ⇒ Window to enter the root password will be prompted
- ⇒ Type the root password, this will remove all the **installed SAM4S Receipt Printer and driver** from the system automatically